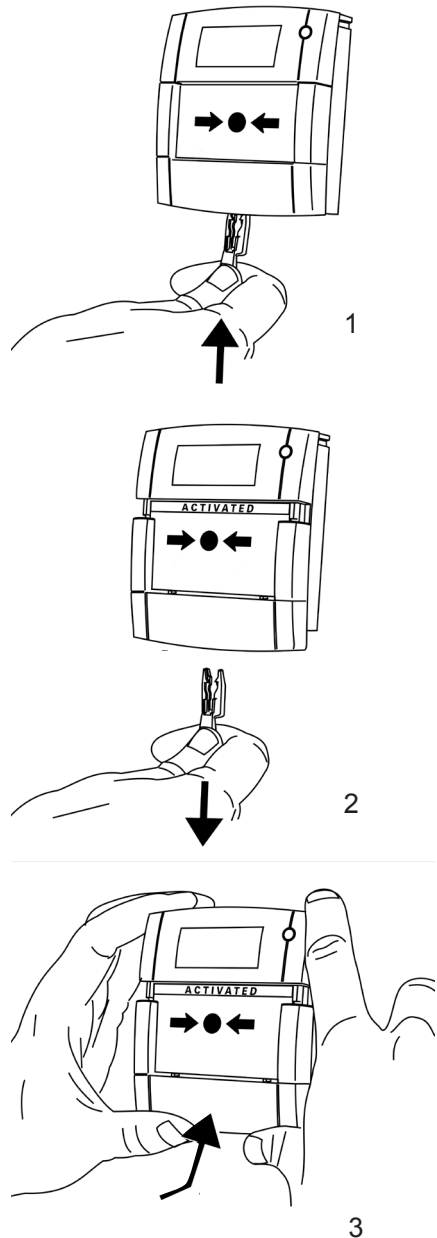
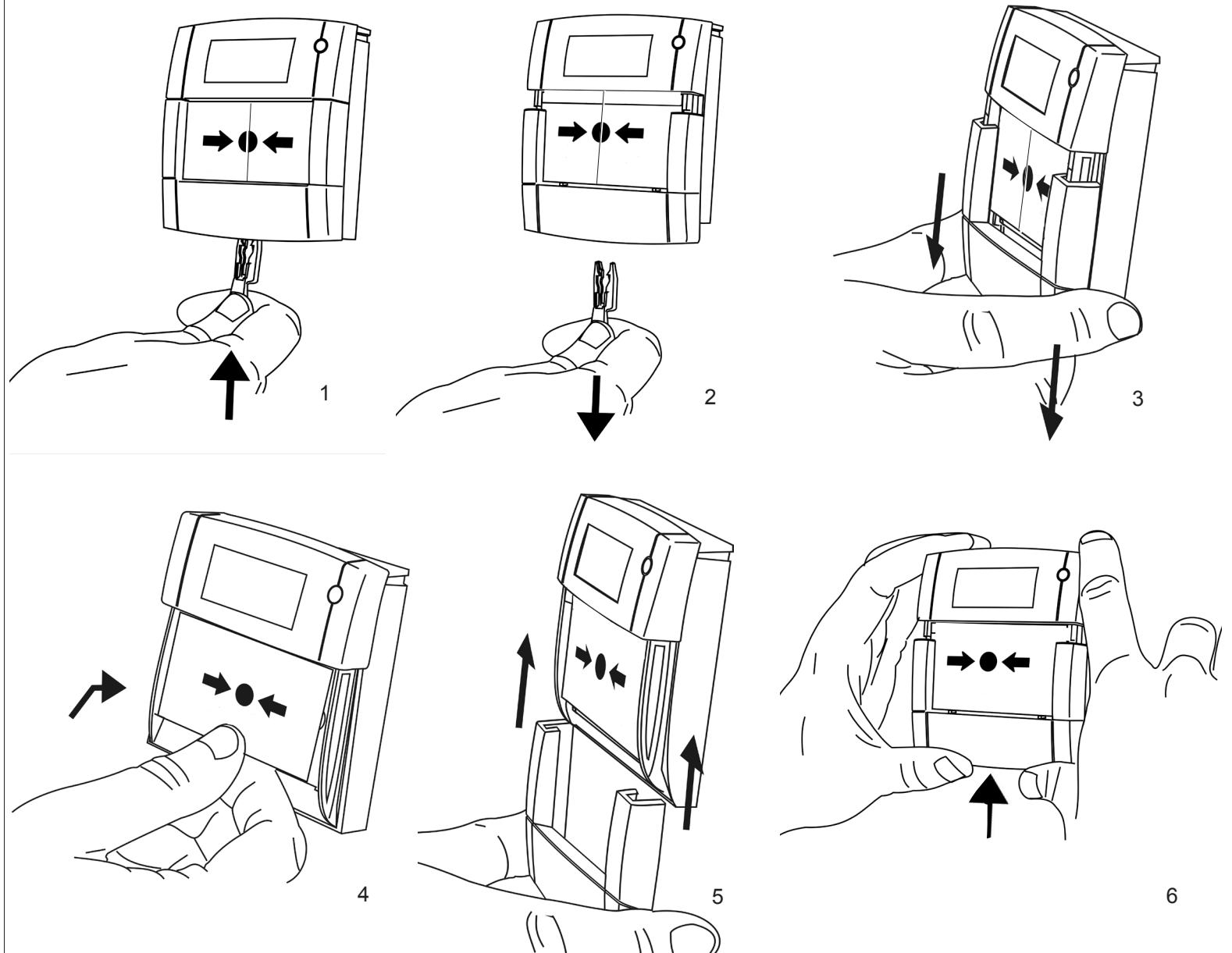
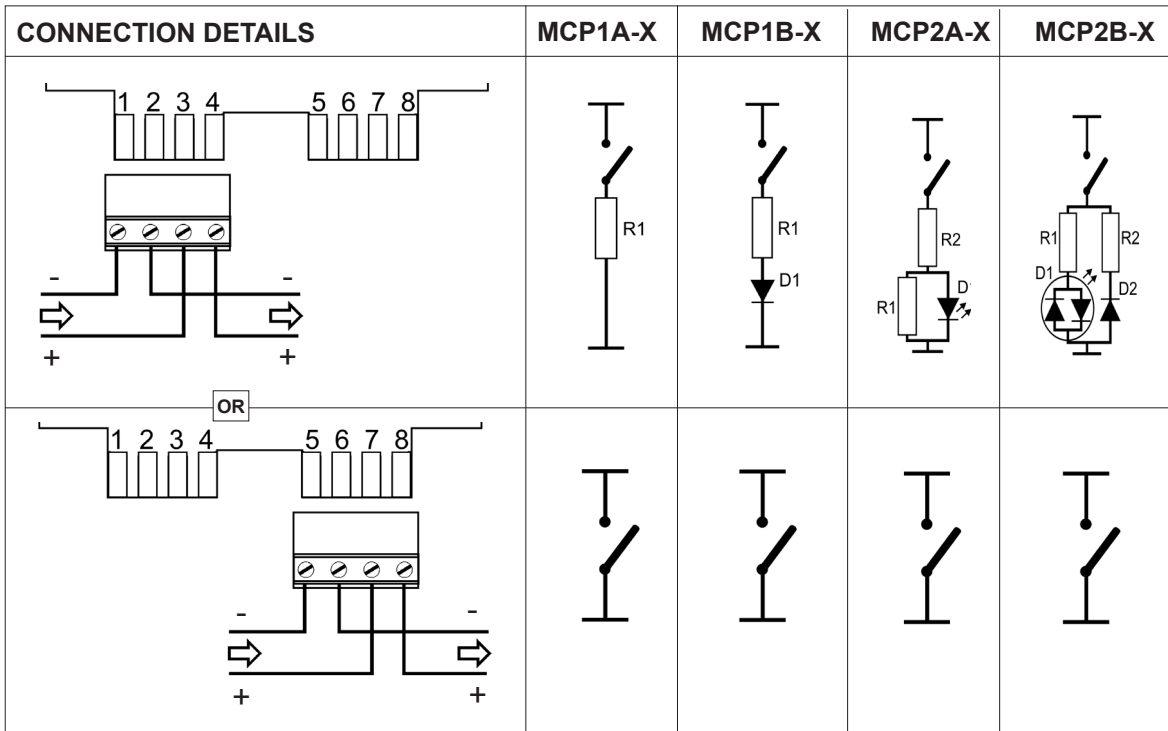


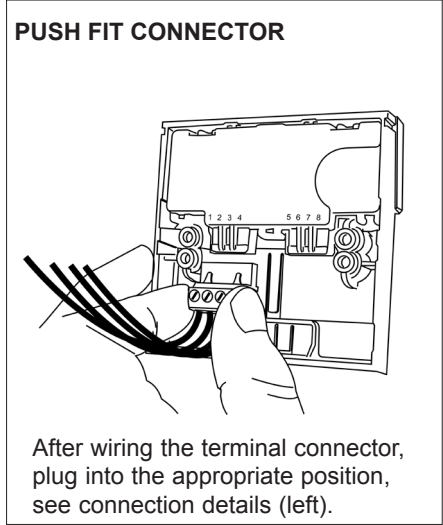
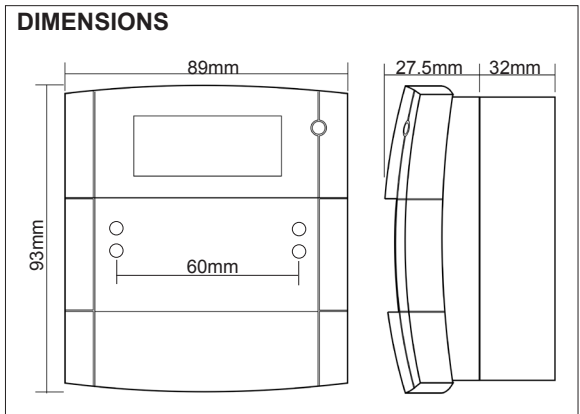
TO TEST & RESET**TO REPLACE GLASS / INTERCHANGE BETWEEN RESETTABLE AND GLASS ELEMENT**

(!) IMPORTANT NOTE: After changing the element from Glass to Flexi, please confirm the operation by pressing the resettable element.



X in the MCP code (left) represents the final digits of the part number, which indicate MCP colour, component values, mounting options and element type.

eg MCP1A -R470SF = (MCP1A, Red, 470R, Surface, Flexible Element).



2831 16

KAC ALARM COMPANY LIMITED,
Thornhill Road, Redditch, Worcestershire, England. B98 9ND.

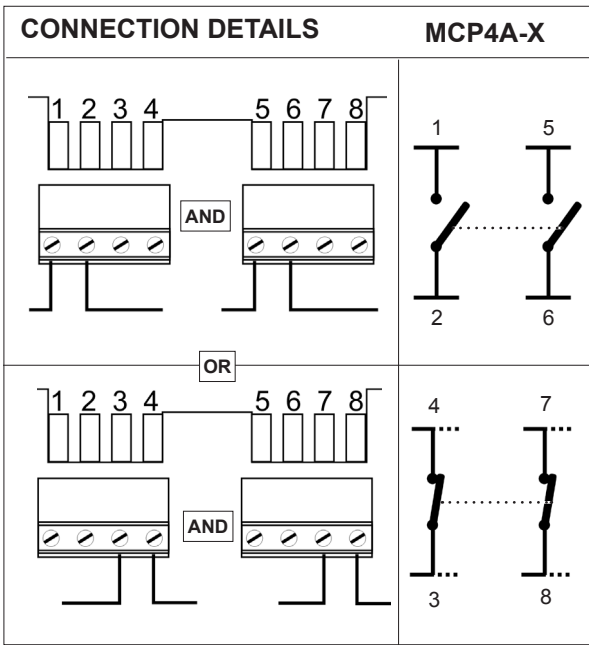
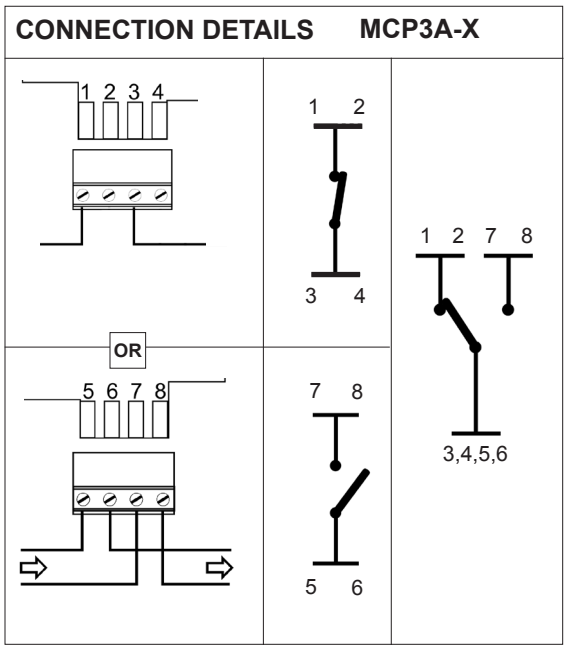
DOP001

EN54-11:2001/A1:2005

Fire detection and fire alarm systems - Part 11: Manual call points

MCP1, MCP2, MCP3, MCP4

Note: This table only applies to red products.



TECHNICAL DATA

- 30VDC Max
- 2A Max
- IP24D
- 110/160g
- 10°C to 55°C

- Red, Ral 3001
- Yellow, Ral 1006
- Green, Ral 6016
- White, Ral 9010
- Blue, Ral 5002

Important Notes; -
Please do not over tighten fixing screws.
The use of lubricants, cleaning solvents or petroleum based products should be avoided.