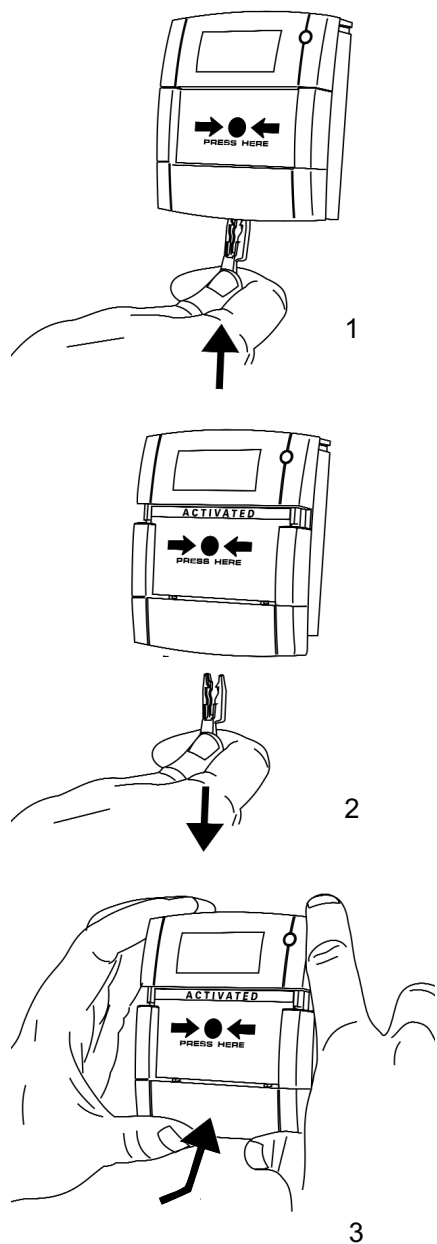
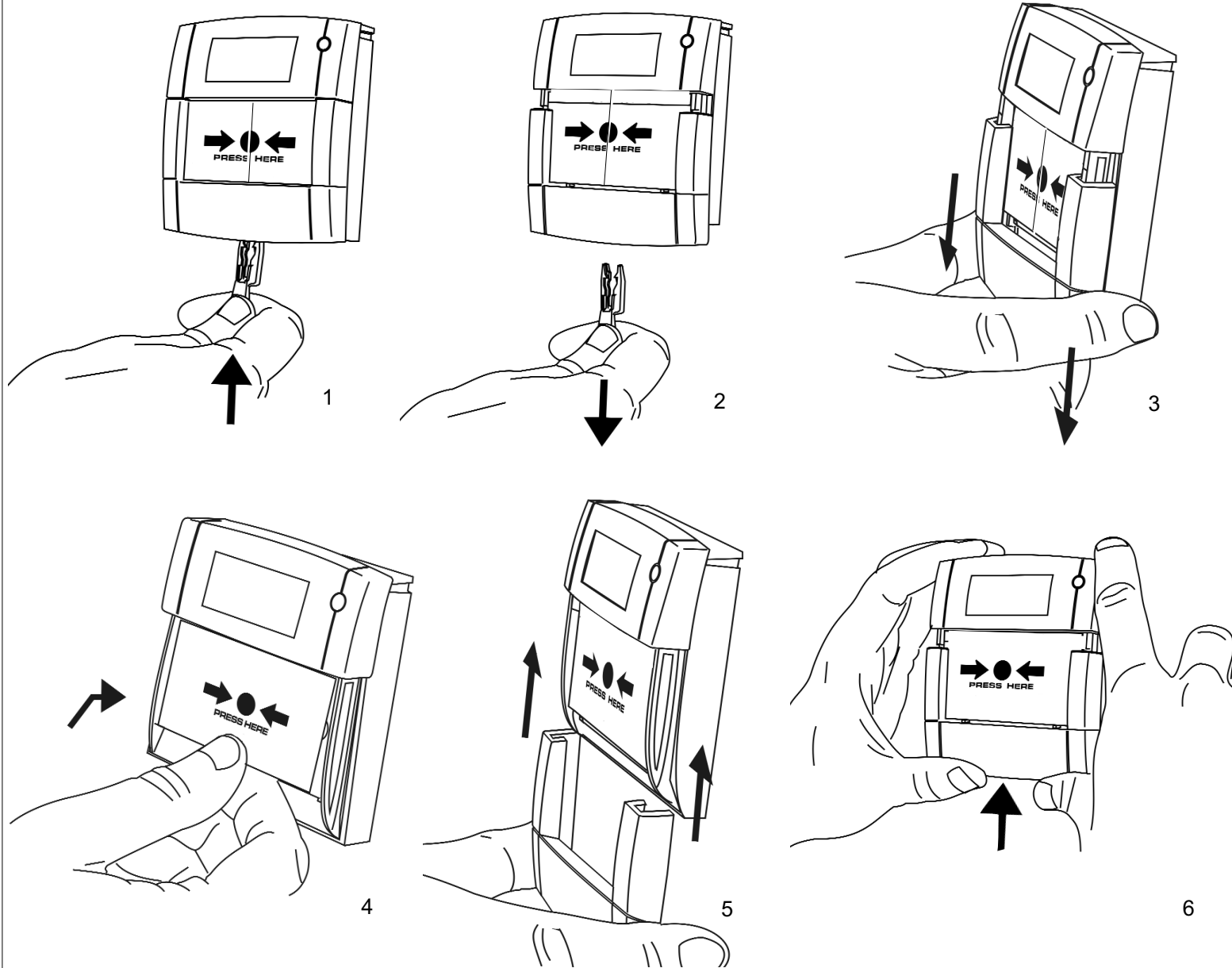
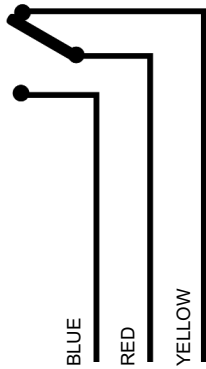


TO TEST & RESET**TO REPLACE GLASS / INTERCHANGE BETWEEN RESETTABLE AND GLASS ELEMENT**

(!) IMPORTANT NOTE: After changing the element from Glass to Flexi, please confirm the operation by pressing the resettable element.

CONNECTION DETAILS MCP6A-xC01xx

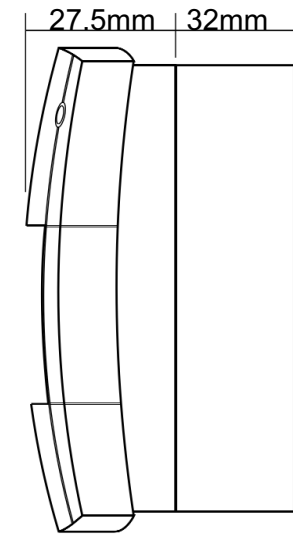
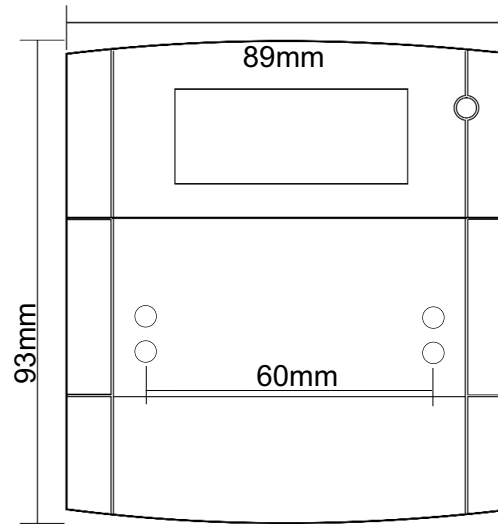


The generic part codes detailed on this data sheet contain a number of 'X' digits to cater for product variation as follows:-

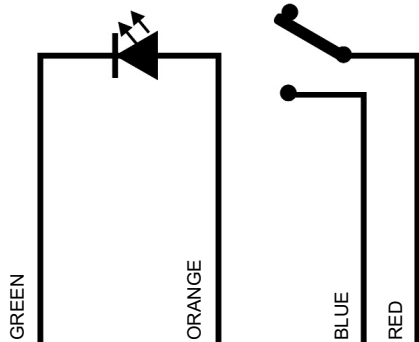
Digit 6 - Product Colour
Digit 10 - Mounting (Surface or Flush)
Digit 11 - Element (Glass or Reseatable)

See MCP label for details.

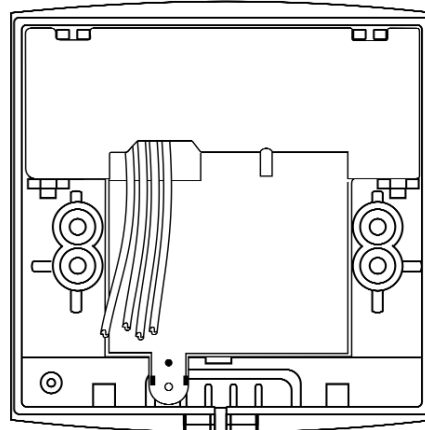
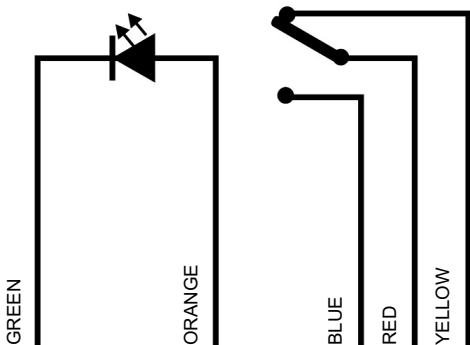
DIMENSIONS



CONNECTION DETAILS MCP6B-xC01xx



CONNECTION DETAILS MCP6B-xC02xx



FLYING LEADS

The MCP6A and MCP6B (including variations).

MCP products are supplied with flying leads to enable connection to 3rd party PCB boards (supplied by others).

TECHNICAL DATA



30VDC Max



1.4A Max



IP24D



110/160g



-10°C to 55°C



Red, Ral 3001
Yellow, Ral 1006
Green, Ral 6016
White, Ral 9010
Blue, Ral 5002



Important Notes; -
Please do not over tighten fixing screws.
The use of lubricants, cleaning solvents or petroleum based products should be avoided.