

INSTALLATION INSTRUCTIONS FOR THE WATERPROOF MANUAL CALL POINT MODELS WCP2A.....,

Model WCP2A

This Model provides a Normally Open contact with series monitoring resistor and LED network, or a clean, normally open contact by means of the alternative positioning of the terminal connector.

General

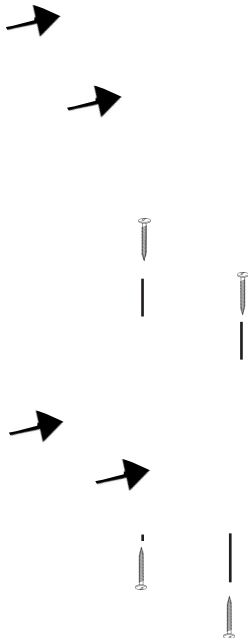
These Call Points are suitable for IP67 environments.

Wall Mounting of Back Box

Mount the back box to a suitably flat surface using the three fixing holes and the screws provided in the installation pack. The cable entry holes should be in the vertical plane. The back box can be mounted with either the single or the double entry holes at the top.

Fitting the WCP Cover to the back box

Plug the 4 way terminal connector onto the appropriate position as shown. Ensure that the O-ring is correctly seated in the channel on the rear of the cover. Place the cover squarely over the back box and carefully push the cover until the locating clips have engaged. Do not use excessive force. It is recommended that the 4 cover fixing screws are used to lock the cover into place.



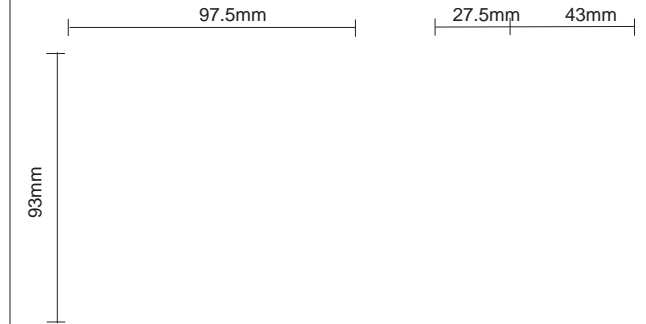
WCP Cover removal

To remove the cover, undo and remove the 4 Cover fixing screws. Place the edge of a large flat bladed screwdriver into the slot between the Cover and back box as shown in below and gently twist until the latches are disengaged. Pull cover away from backbox.

CONNECTION DETAILS		WCP2A-X	
		3	4
-	-		
+	+	1	2
OR			
		5	6
		7	8

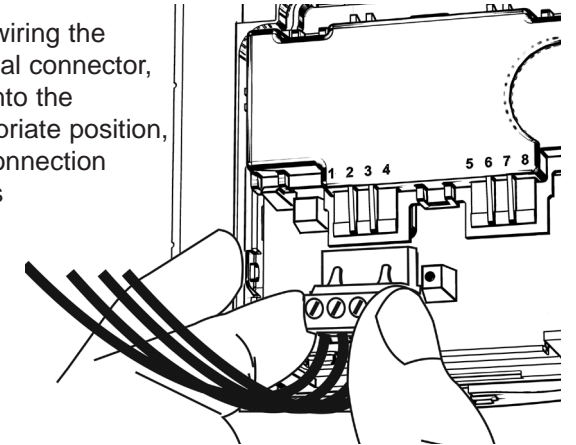
X in the WCP code (above) represents the final digits of the part number, which indicate MCP colour, component values, mounting options and element type. eg WCP1A-R470SF = (WCP1A, Red, 470R, Surface, Flexible Element).

DIMENSIONS



PUSH FIT CONNECTOR

After wiring the terminal connector, plug into the appropriate position, see connection details (left).



TECHNICAL DATA

30VDC Max -25°C to 70°C

2A Max Red, Ral 3001
 Yellow, Ral 1006
 Green, Ral 6024
 White, Ral 9010
 Blue, Ral 5005

IP 67*

350g

* - IP67 is not a requirement of EN54-11.